

LIGHT CONTROLLER

LC 100

Manual and User Guide

Please read this manual before operating this product



PSI, spol. s r. o., Drásov 470, 664 24 Drásov, Czech Republic
FAX: +420 511 440 901, TEL: +420 511 440 011, www.psi.cz

© PSI (Photon Systems Instruments), spol. s r. o. (hereinafter PSI), 2016

This document and its parts can be copied or provided to a third party only with the express permission of PSI.

The contents of this manual have been verified to correspond to the specifications of the device. However, deviations cannot be ruled out. Therefore, a complete correspondence between the manual and the real device cannot be guaranteed. The information in this manual is regularly checked, and corrections may be made in subsequent versions.

The visualizations shown in this manual are only illustrative.

This manual is an integral part of the purchase and delivery of equipment and its accessories and both Parties must abide by it.

Table of Contents

Table of Contents	3
1. List of Equipment	4
2. Safety Precautions	5
3. Device Description	6
4. Device Operation	7
5. Statement of Limited Warranty.....	15

1. List of Equipment

Carefully unpack the carton, which contains:

- **Light Controller LC 100**
- **Communication Cable**
- **This Operation Manual** (*on a CD or a printed version*)
- **Optional Accessories** (*according to your specific order*)

Note:

If any item is missing, please contact the manufacturer. Also check the carton for any visible external damage. If you find any damage, notify the carrier and the manufacturer immediately. In this case, the carton and all packing materials should be retained for inspection by the carrier or insurer.

For customer support, please write to: support@psi.cz

2. Safety Precautions

- **LIGHT CONTROLLER LC 100 IS DESIGNED FOR SOLE CONTROL OF THE PSI LED LIGHT SOURCES. DO NOT USE IT WITH ANY OTHER DEVICE!**
- **WHEN CONNECTING THE INSTRUMENT MODULES, USE ONLY THE CABLES SUPPLIED BY THE MANUFACTURER!**
- **KEEP THE INSTRUMENT DRY AND AVOID WORKING IN HIGH HUMIDITY ENVIRONMENT!**
- **THE MANUFACTURER IS NOT RESPONSIBLE FOR ANY DAMAGE DUE TO IMPROPER OR INCOMPETENT OPERATION!!!**

GENERAL ELECTRICAL SAFETY GUIDELINES:

- Routinely check the devices and their wiring.
- Replace worn or damaged cords immediately.
- Use electrical extension cords wisely and do not overload them.
- Place the devices on a flat and firm surface. Keep them away from wet floors and counters.
- Avoid touching the device, socket outlet or switch if your hands are wet.
- Do not perform any alterations to the electrical part of the devices or their components.

3. Device Description

FRONT PANEL:



[1] – Four LED indicators: on if the corresponding light is connected.

[2] – Two-line display.

[3] – Four control keys.

REAR PANEL:



[1] – ON/OFF mains switch.

[2] – Power connector.

[3] – Service connector.

[4] – Four serial connectors. The LED Light Source(s) can be connected to any of the four connectors; The Light Controller automatically detects the connected LED Light Source(s).

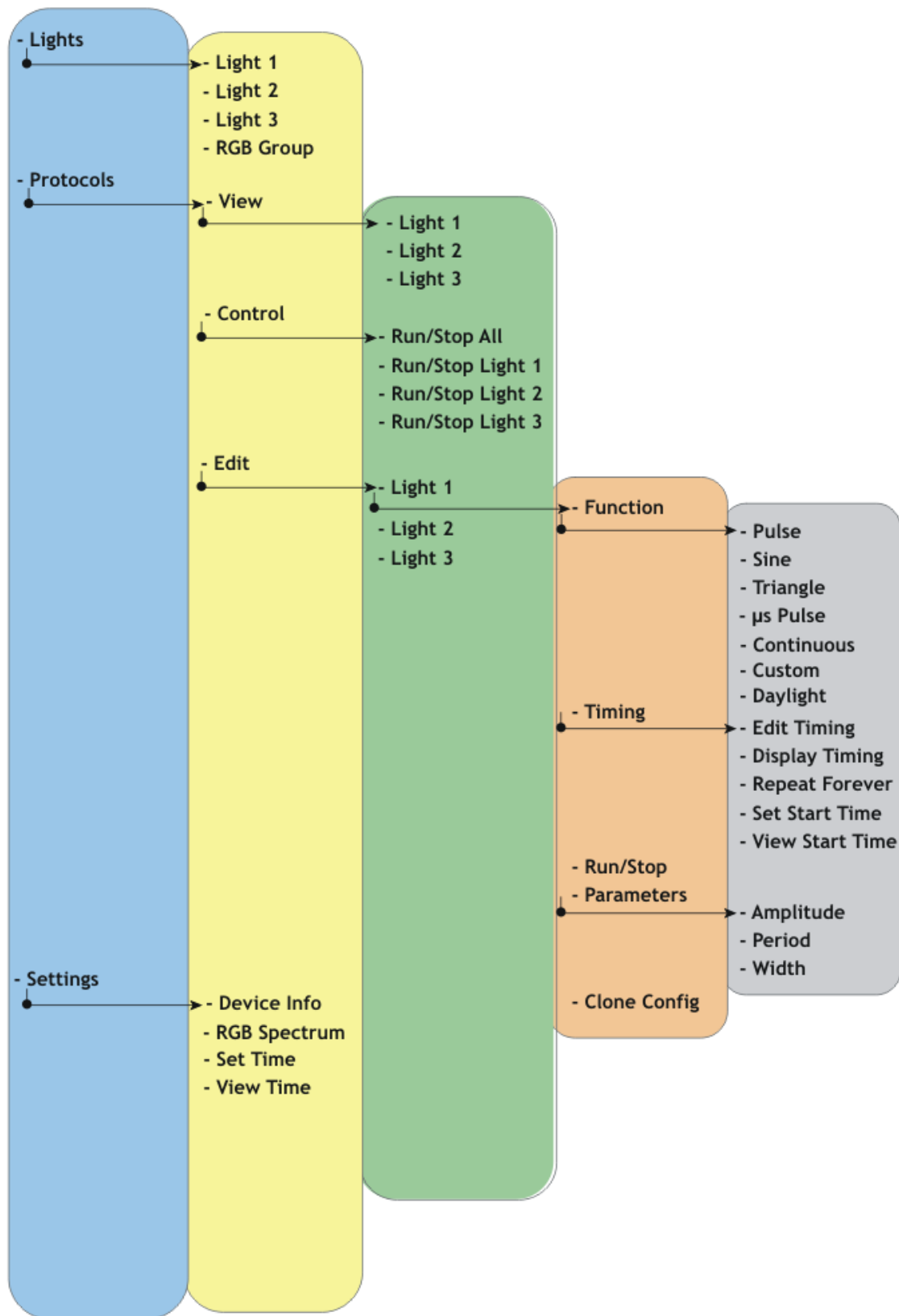
4. Device Operation

Light Controller LC 100 supports up to four light sources. Each light source can be configured and calibrated independently using customer written protocols.

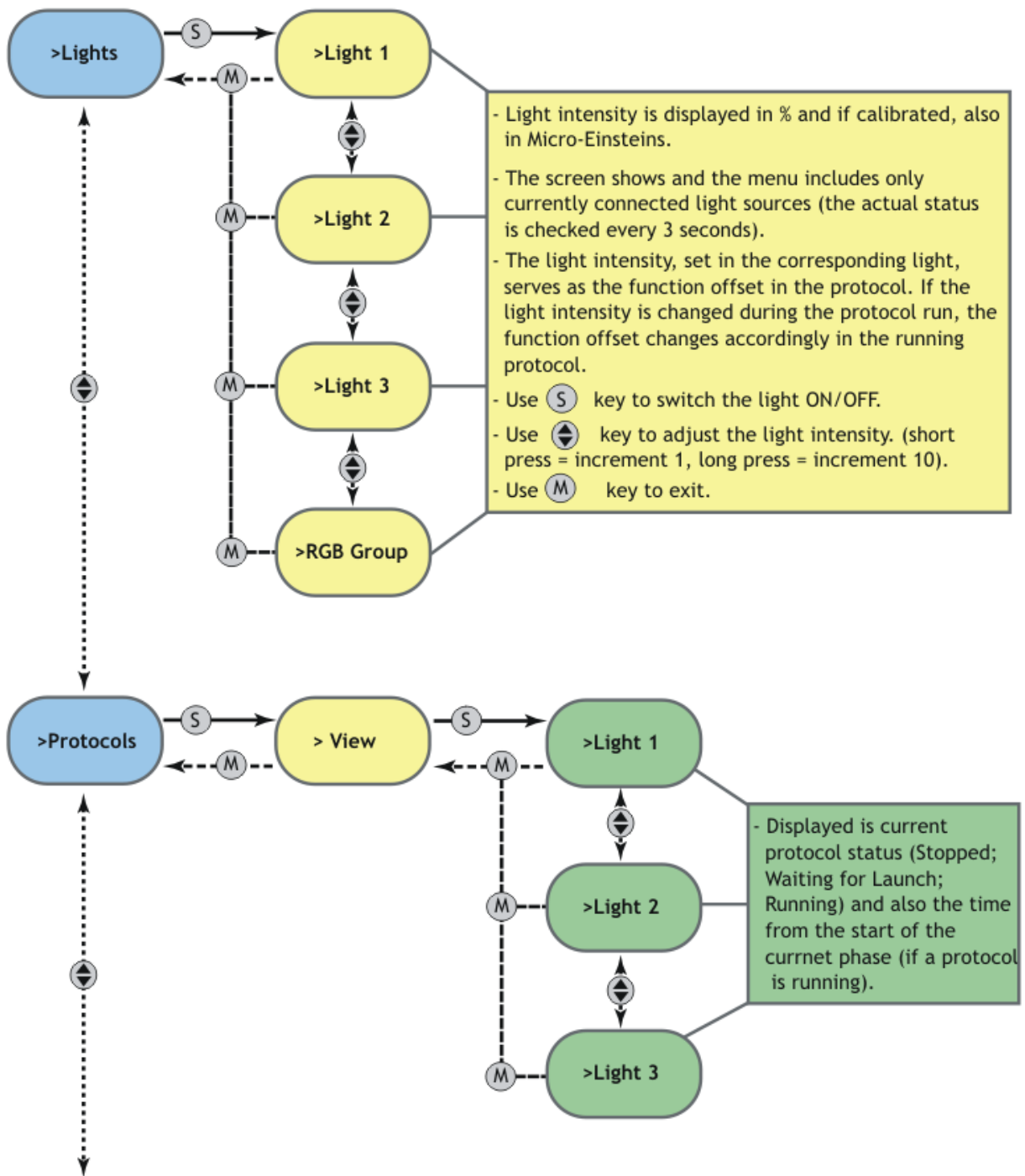
For light control and protocol writing, use the following four keys located on the front panel:

- [M]:** To move back in the menu tree or to exit the menu.
- [S]:** To move forward in the menu tree or to save your selection.
- [↑]:** To move up in the menu or to add value.
- [↓]:** To move down in the menu or to subtract value.

Menu Tree - Main



Menu Lights + Menu Protocols



Menu Protocols - Control + Edit

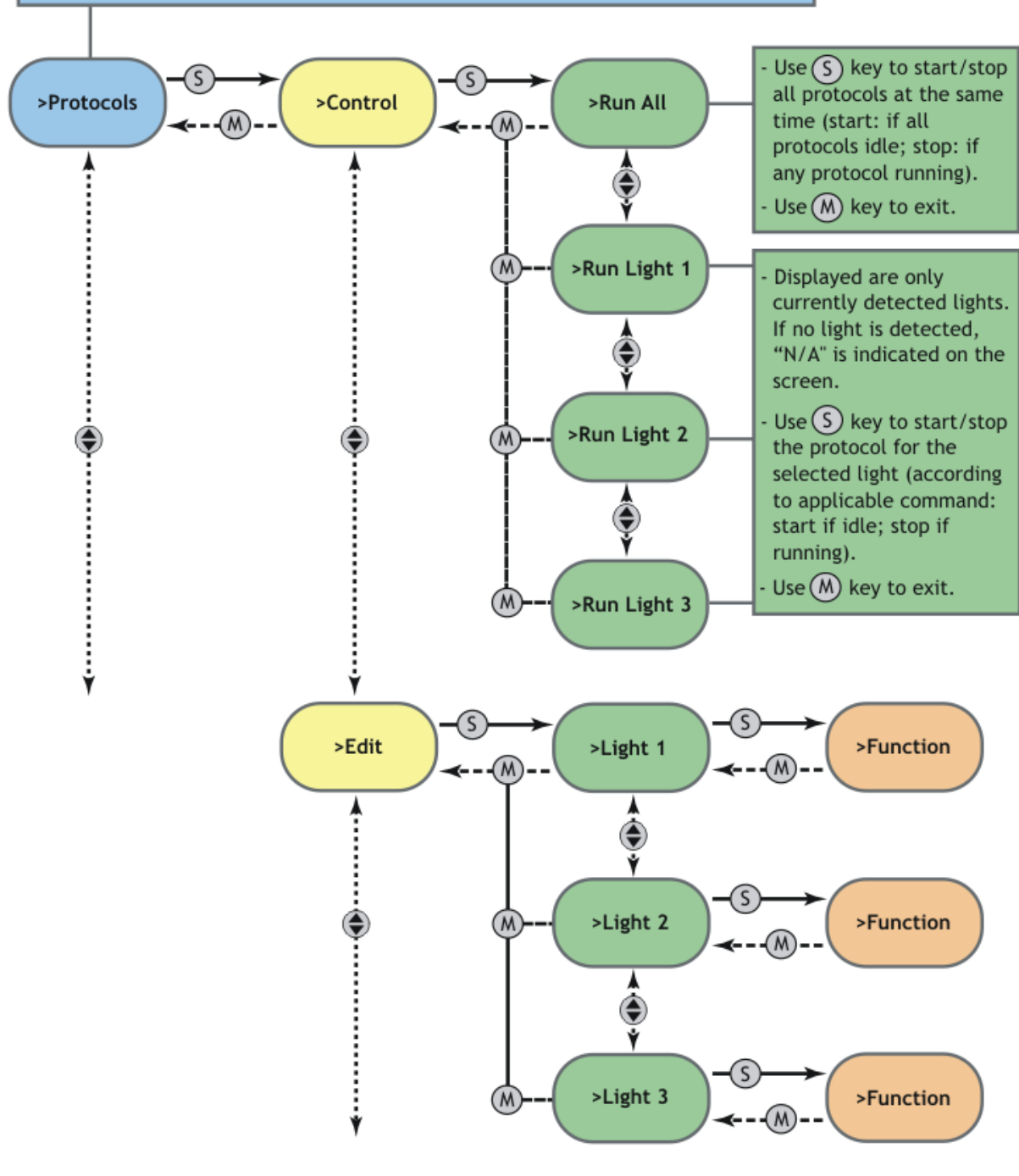
EACH PROTOCOL CONSISTS OF THREE INDEPENDENTLY CONFIGURABLE PHASES:

- 1) Light Period (LP) = Time period during which the defined function is performed.
- 2) Dark Period (DP) = Time period during which the light is off.
- 3) Repeats = Number of repeats for the phase.

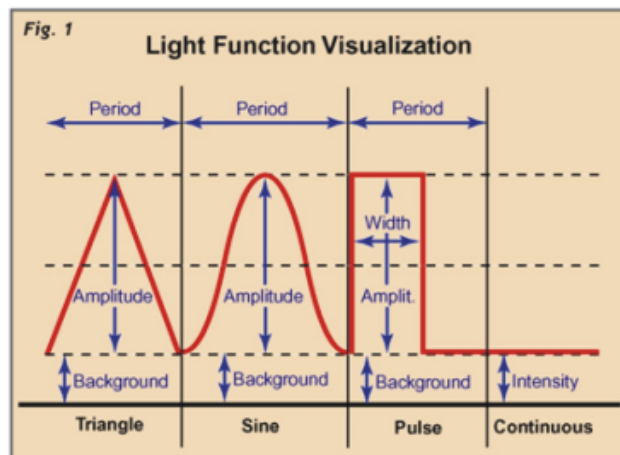
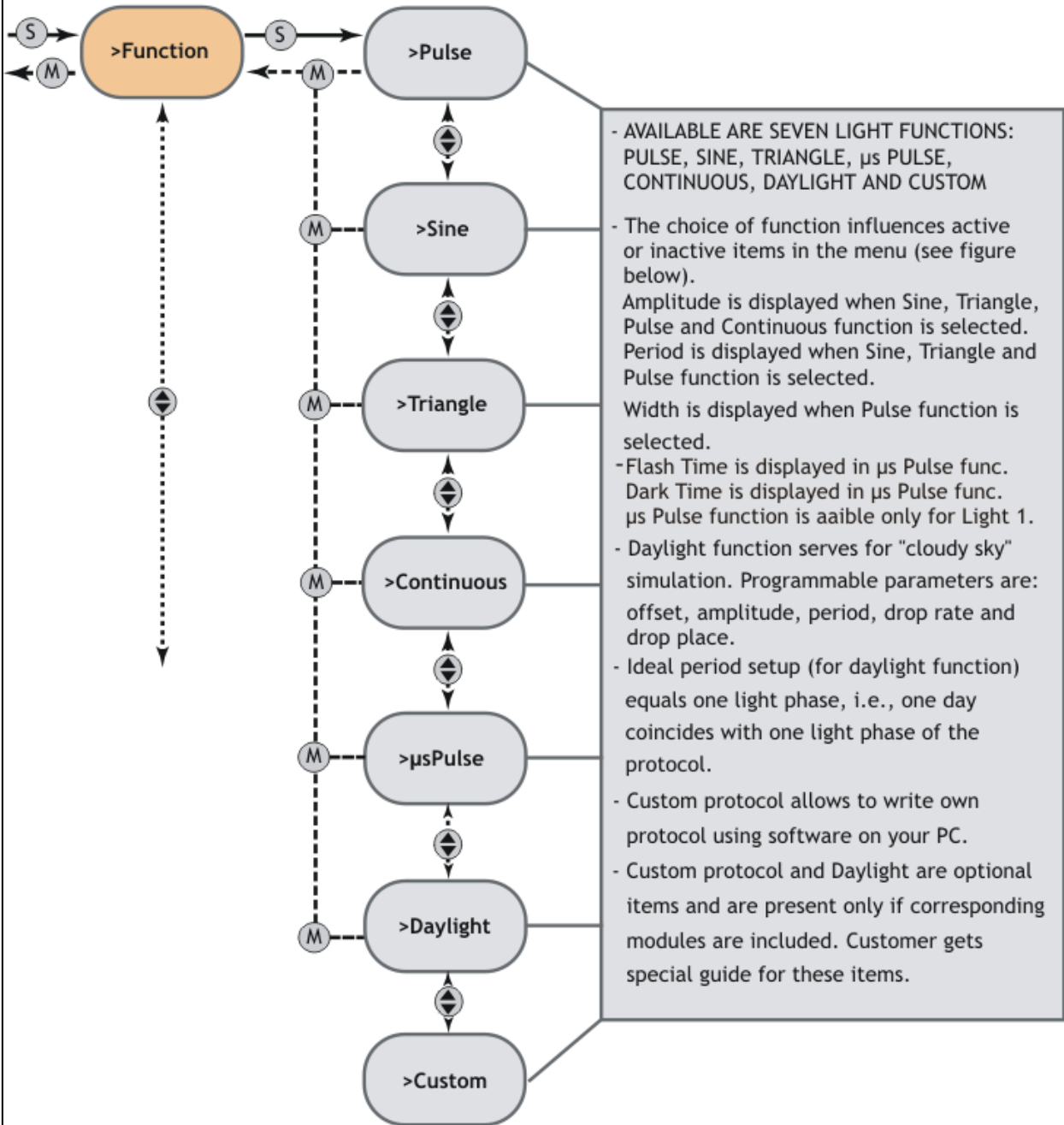
OTHER EDITABLE PROTOCOL FUNCTIONS:

Repeat forever = The whole protocol runs in infinite loop.

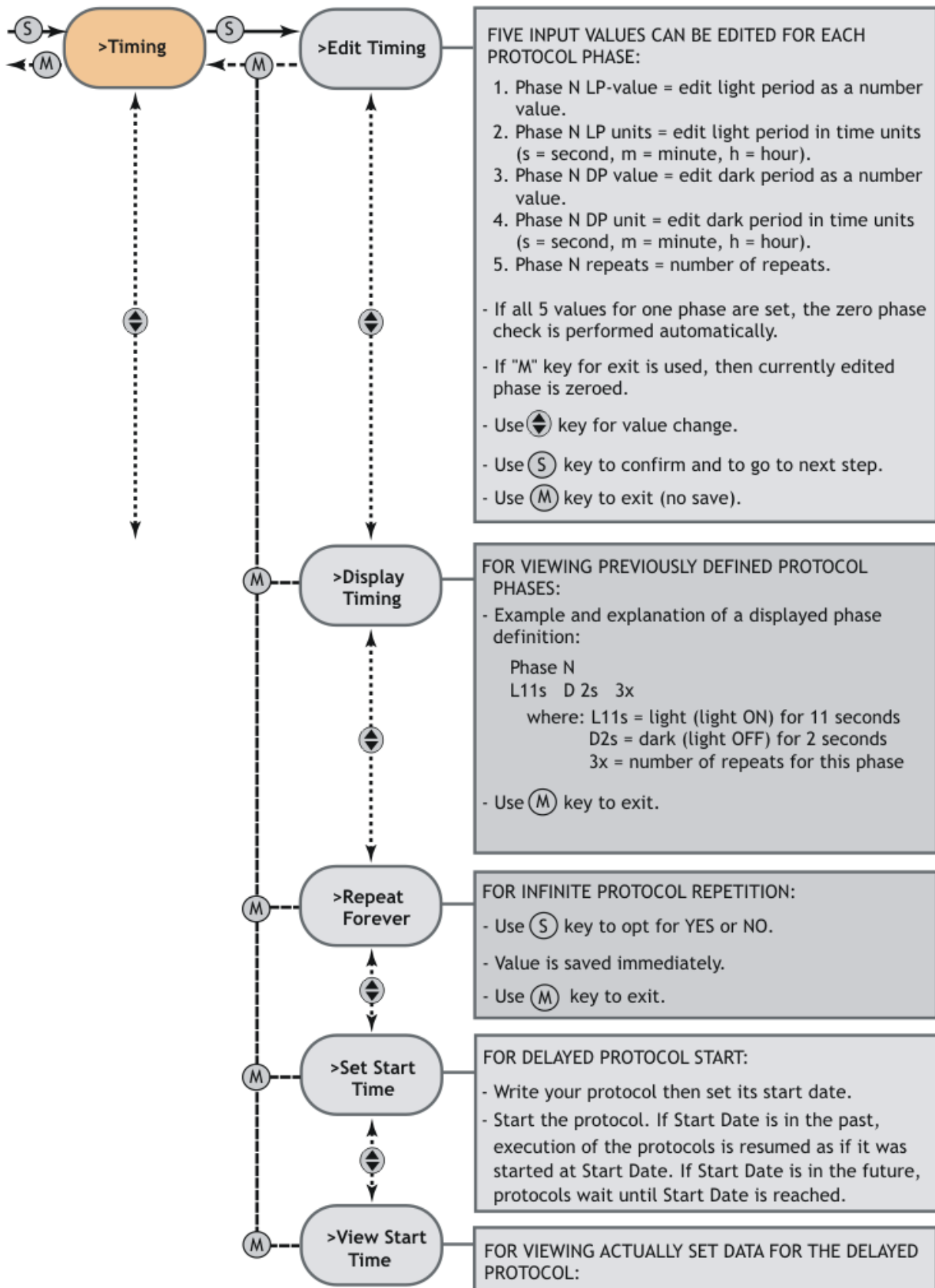
Zero phase = LP + DP = 0; or Repeats = 0. Editing of phases is finished when the Zero phase is confirmed.



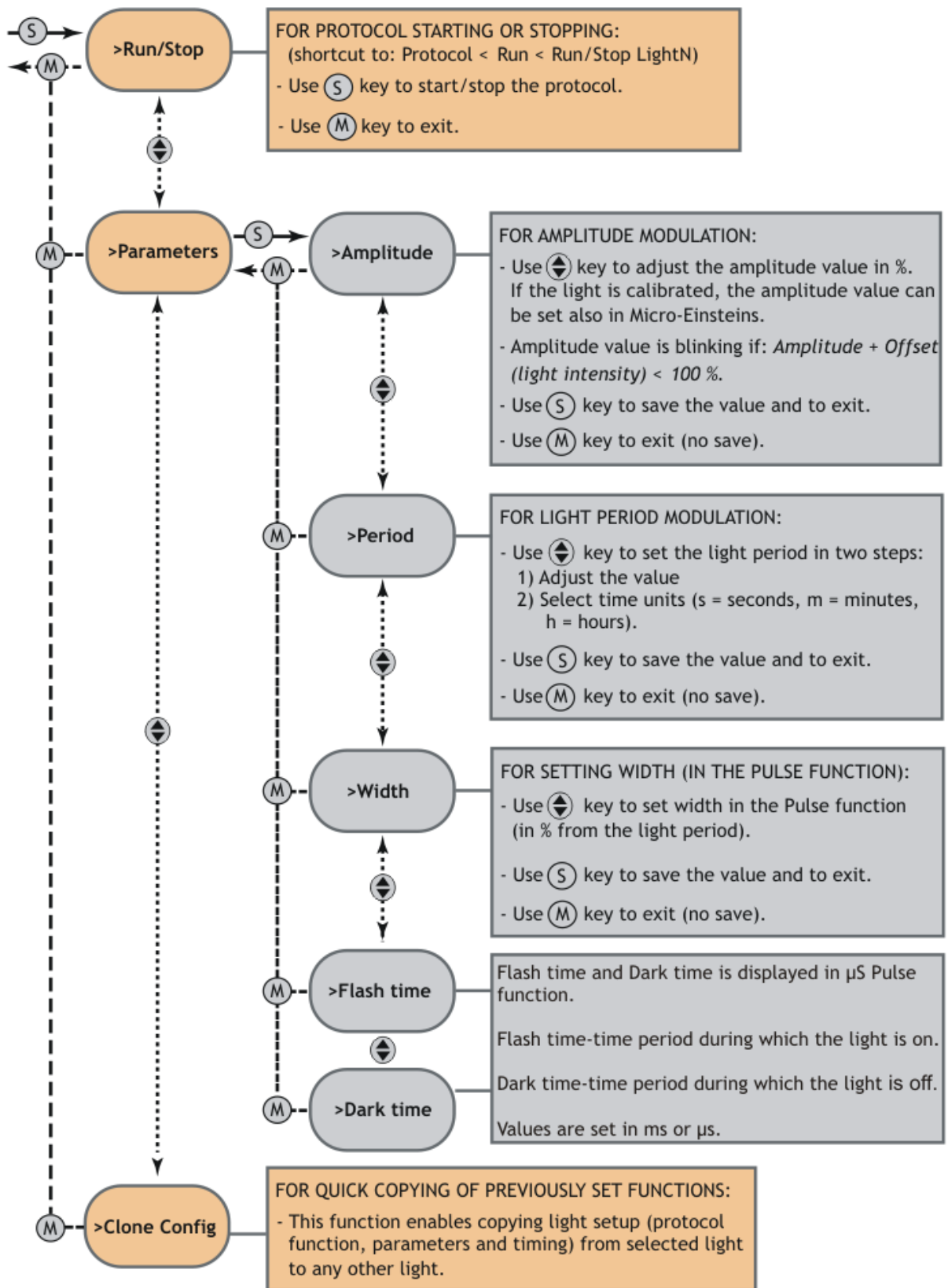
Menu Protocols - Edit - LightN - Function



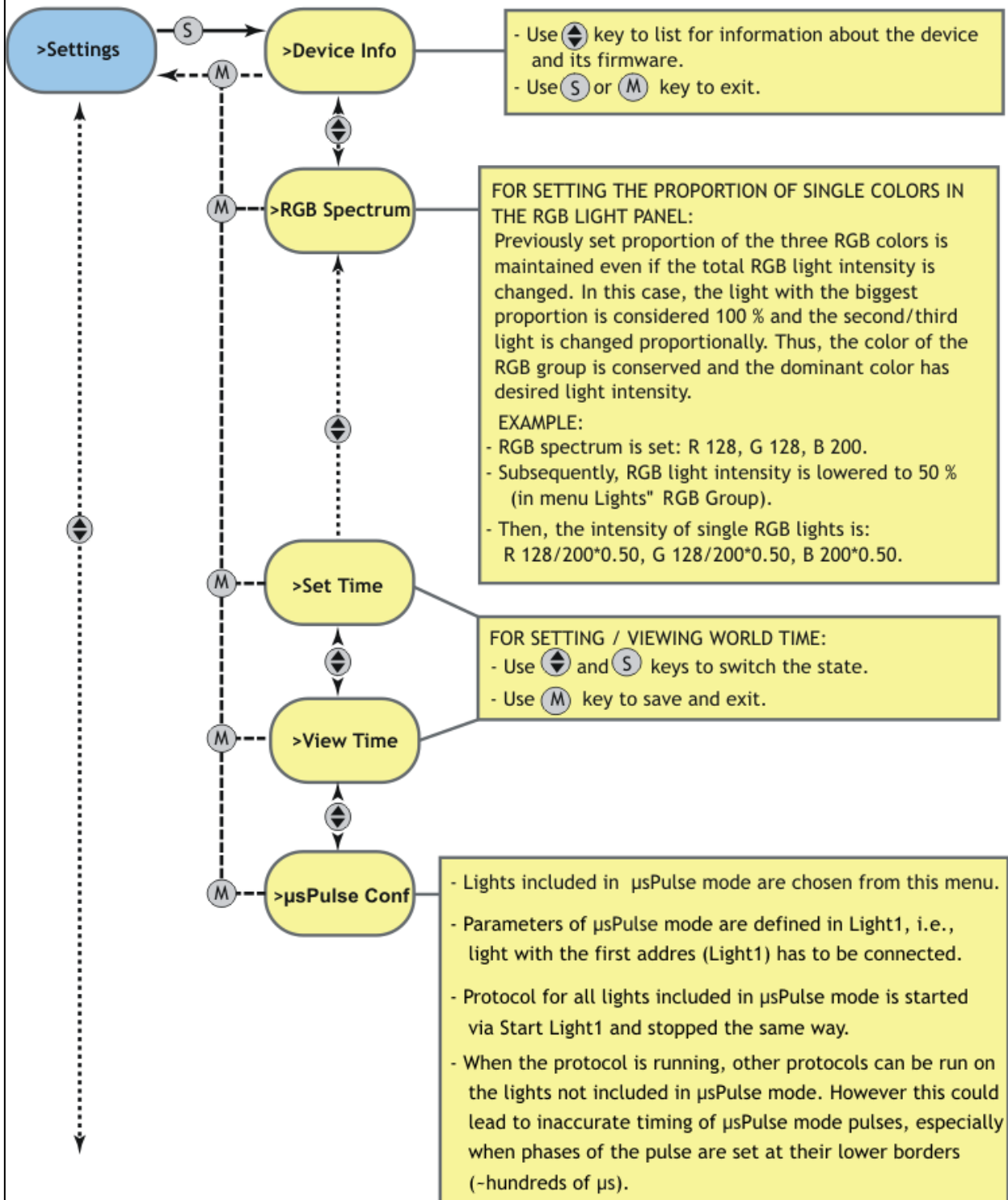
Menu Protocols - Edit - LightN - Timing



Menu Protocols - Edit - LightN - Run/Stop...Clone Config



Menu Settings → Device info...µsPulse



5. Statement of Limited Warranty

- This Limited Warranty applies only to the Light Controller LC 100. It is valid one year from the date of shipment.
- If at any time within this warranty period the instrument does not function as warranted, return it and the manufacturer will repair or replace it at no charge. The customer is responsible for shipping and insurance charges (for the full product value) to PSI. The manufacturer is responsible for shipping and insurance on return of the instrument to the customer.
- No warranty will apply to any instrument that has been (i) modified, altered, or repaired by persons unauthorized by the manufacturer; (ii) subjected to misuse, negligence, or accident; (iii) connected, installed, adjusted, or used otherwise than in accordance with the instructions supplied by the manufacturer.
- The warranty is return-to-base only, and does not include on-site repair charges such as labor, travel, or other expenses associated with the repair or installation of replacement parts at the customer's site.
- The manufacturer repairs or replaces faulty instruments as quickly as possible; the maximum time is one month.
- The manufacturer will keep spare parts or their adequate substitutes for a period of at least five years.
- Returned instruments must be packaged sufficiently so as not to assume any transit damage. If damage is caused due to insufficient packaging, the instrument will be treated as an out-of-warranty repair and charged as such.
- PSI also offers out-of-warranty repairs. These are usually returned to the customer on a cash-on-delivery basis.
- *Wear & Tear Items* (such as sealing, tubing, padding, etc.) are excluded from this warranty. The term *Wear & Tear* denotes the damage that naturally and inevitably occurs as a result of normal use or aging even when an item is used competently and with care and proper maintenance.

For customer support, please write to: support@psi.cz